

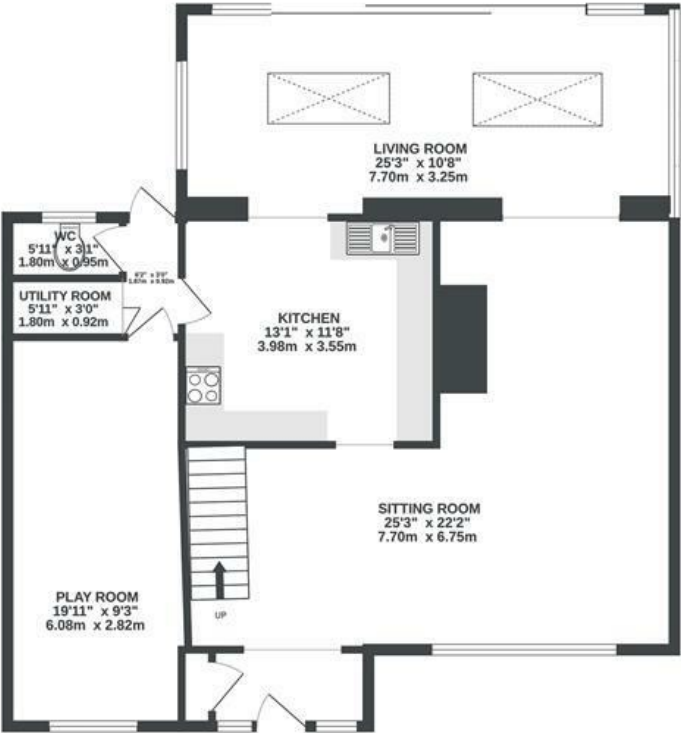
Conygar Close

CLEVEDON

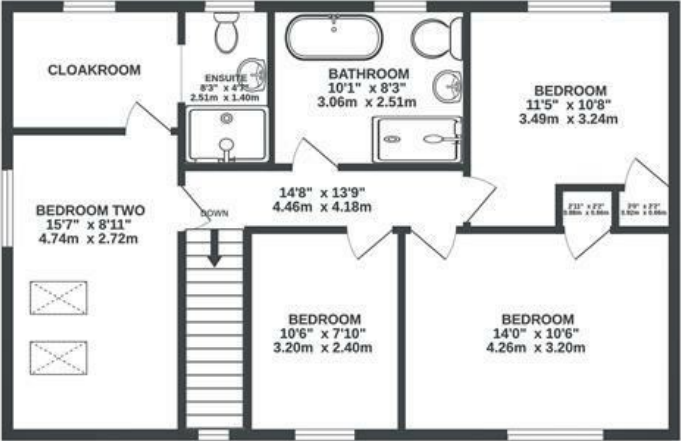
APPROXIMATE FLOOR AREA
170 SQM / 1825 SQFT



GROUND FLOOR



1ST FLOOR



Boardwalk

Conygar Close

, CLEVEDON



£750,000



4 Bedrooms



BS21 6AP



3 Bathrooms

"The house was just a lovely fit to start raising our family, with a large back garden that leads onto the woods where you can enjoy walks and bike rides. We made huge changes to make the house more modern but still cosy and a fantastic space for entertaining. We'll miss the outdoor space, the safety of the road for children to play, and the room to have family and friends round. Being so close to schools and shops has been brilliant, with frequent visits to the seafront and Ladye Bay where we have enjoyed many sunsets."

